

OFFICE CHAIR  
**ENTRY**



OFFICE CHAIR

# ENTRY

MATERIAL

Backrest: Nylon Frame with Nylon Mesh Upholstery  
Seat: Cushion with Nylon Cover  
Cushion: Polyurethane Foam with Fabric Upholstery  
Armrests: Nylon with Polyurethane Arm pads  
Base: Nylon / Polished Aluminium  
Casters: Nylon

MECHANICAL UNIT

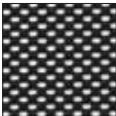
Synchronized Tilt Mechanism

CERTIFICATION

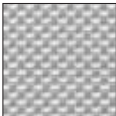
UL GREENGUARD: Gold

UPHOLSTERY COLOUR

Nylon Mesh



Black



Light Grey

Fabric



Black



Dull Grey



Indigo Blue



Dark Purple



Signal Red

Backrest - Black Frame and Nylon Mesh  
Base - Aluminium



**ENTRY-HB/3DA/AS/ALB**  
3D Adjustable Armrests  
Depth Adjustable Seat

Backrest - Black Frame and Nylon Mesh  
Base - Black Nylon



**ENTRY-HB/3DA/AS/NLB**  
3D Adjustable Armrests  
Depth Adjustable Seat

Backrest - White Frame with Light Grey Nylon Mesh  
Base - Aluminium



**ENTRY-HW/3DA/AS/ALB**  
3D Adjustable Armrests  
Depth Adjustable Seat

Backrest - White Frame with Light Grey Nylon Mesh  
Base - Black Nylon



**ENTRY-HW/3DA/AS/NLB**  
3D Adjustable Armrests  
Depth Adjustable Seat

W.645 mm  
D.585 mm  
H.1110 mm

**Backrest and Headrest**  
W.490 H.705 mm  
**Seat**  
W.490 D.430 mm



**ENTRY-MB/3DA/AS/ALB**  
3D Adjustable Armrests  
Depth Adjustable Seat



**ENTRY-MB/3DA/AS/NLB**  
3D Adjustable Armrests  
Depth Adjustable Seat



**ENTRY-MW/3DA/AS/ALB**  
3D Adjustable Armrests  
Depth Adjustable Seat



**ENTRY-MW/3DA/AS/NLB**  
3D Adjustable Armrests  
Depth Adjustable Seat

W.645 mm  
D.570 mm  
H.930 mm

**Backrest**  
W.490 H.525 mm  
**Seat**  
W.490 D.430 mm

**ENTRY-MB/2DA/FS/NLB**  
Height Adjustable Armrests  
Fixed Seat

**ENTRY-MW/2DA/FS/NLB**  
Height Adjustable Armrests  
Fixed Seat



Back Lock



Gas Lift



Tilt Mechanism



3D Adjustable Armrests



Height Adjustable Armrests



Adjustable Lumbar Support