

TRAINING / LECTURE CHAIR

CLAVO



TRAINING / LECTURE CHAIR

CLAVO

MATERIAL

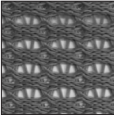
Structure: Steel in Epoxy Finish
Backrest: Polypropylene with Nylon Mesh
Upholstery
Seat: Cushion with Polypropylene Cover
Cushion: Polyurethane Foam with Fabric Upholstery
Armrests and Lecture Tablet: Polypropylene
Casters: Nylon

UPHOLSTERY COLOUR

Nylon Mesh

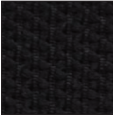


Black

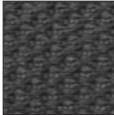


Grey

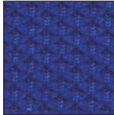
Fabric



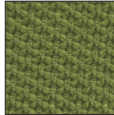
Black



Grey



Blue



Green



Orange



Flip Lecture Tablet
280 x 390 mm tablet fastened to the armrest.



CLAVO-TR/B
Structure - Black
Backrest - Black / Grey Nylon Mesh



CLAVO-TR/W
Structure - White
Backrest - Grey Nylon Mesh

W.597 mm
D.550 mm
H.833 mm
Backrest
W.440 H.350 mm
Seat
W.460 D.450 mm



CLAVO-LR/B
Structure - Black
Backrest - Black / Grey Nylon Mesh



CLAVO-LR/W
Structure - White
Backrest - Grey Nylon Mesh

W.728 mm
D.570 mm
H.833 mm
Backrest
W.440 H.350 mm
Seat
W.460 D.450 mm