

EXECUTIVE CHAIR
EXC-27



EXECUTIVE CHAIR

EXC-27

MATERIAL
Backrest: Polypropylene Frame with Polyurethane Foam and Genuine Leather Upholstery
Seat and Headrest: Polyurethane Foam with Genuine Leather Upholstery
Armrests: Polypropylene with Polyurethane Armpads
Base: Brushed Aluminium
Casters: Nylon

MECHANICAL UNIT
Knee Tilt Mechanism

COLOUR
Black



EXC-27P

W.615 mm
D.640 mm
H.1300 mm

Backrest and Headrest
W.480 H.860 mm

Seat
W.490 D.480 mm



EXC-27D

W.615 mm
D.640 mm
H.1120 mm

Backrest
W.480 H.680 mm

Seat
W.490 D.480 mm



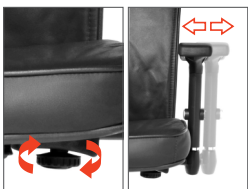
1 Back Lock (Any Angle)



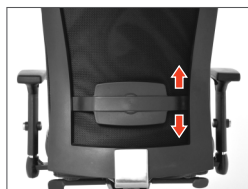
2 Gas Lift (Approx. 60 mm)



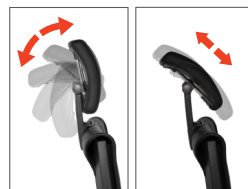
3 Tilt Mechanism



4 4D Adjustable Armrests
(Height Adjustment 7 Steps)



5 Adjustable Lumbar Support



6 Adjustable Headrest