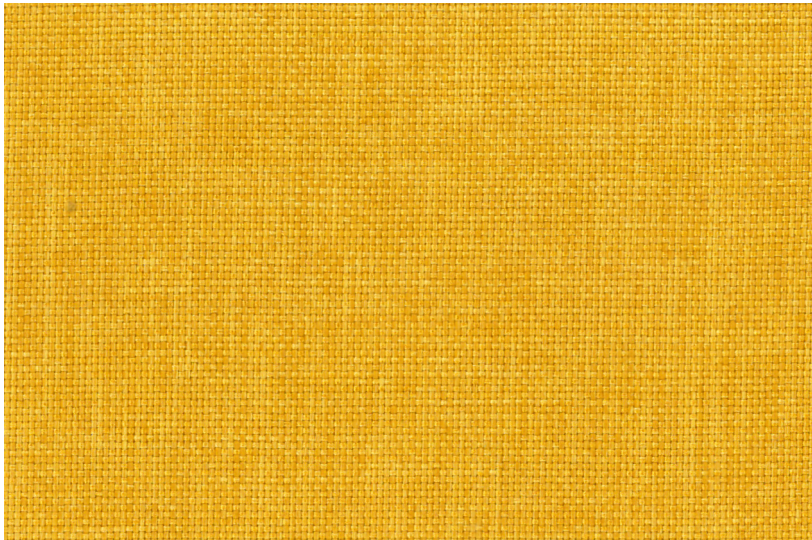
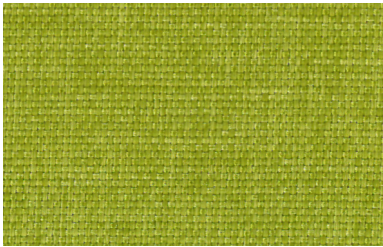


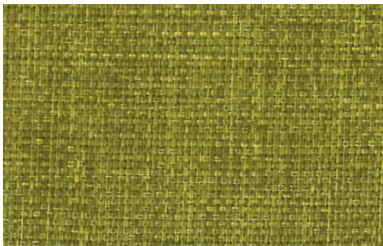
SEATING & PANEL FABRIC
TEXTURE 3



2201 Mustard



2208 Lawn



2209 Leaf



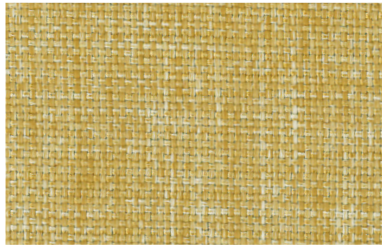
2202 Wheat



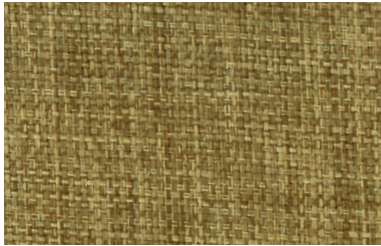
2205 Light Brown



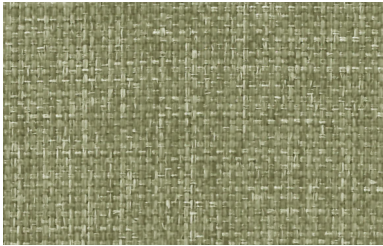
2210 Light Grey



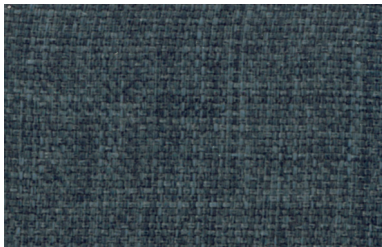
2203 Beige



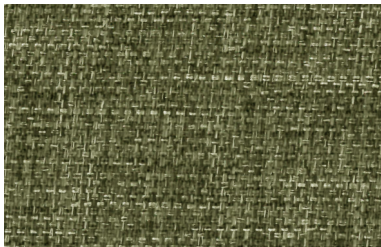
2206 Brown



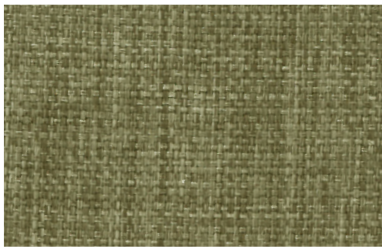
2211 Grey



2204 Navy Blue



2207 Planet



2212 Dark Grey

SEATING & PANEL FABRIC

TEXTURE 3



SPECIFICATION	
Composition	100% Polyester
Weight	240 grammes per square metres
Width	145 cms / 57 inches (+/- 1%)
Finishing	Water Repellent
Abrasion Resistance	In excess of 160,000 Rubs (12 kpa) Martindale (ASTM D4966-2012)
Tensile Strength	Warp: 312.3 lbs, Weft: 330.7 lbs (ASTM D5035-2011)
Seam Slippage	Warp: 164.2 lbs, Weft: 187.9 lbs (ASTM D434-1995)
Colour Fastness to Crocking	Dry 4-5 / Wet 4-5 (AATCC 8-2013)
Colour Fastness to Light	3.5 (AATCC 16.3-2014 ; Option 3, Water Cooled, Xenon-Arc Lamp)
Water Repellent	Passed
Flammability	US CPSC 16 CFR Part 1610 - March 25, 2008 Edition : Class 1
Cleansing	For water based stains, use a water - based cleansing agent. For oil based stains, use a solvent cleanser.
Colour Matching	All colours are matched by sphere spectrophotometer to ensure continuity within commercial tolerances. Batch to batch variation in shade may vary slightly between dye lots. Sample cuttings from the current stock shades can be obtained upon request.