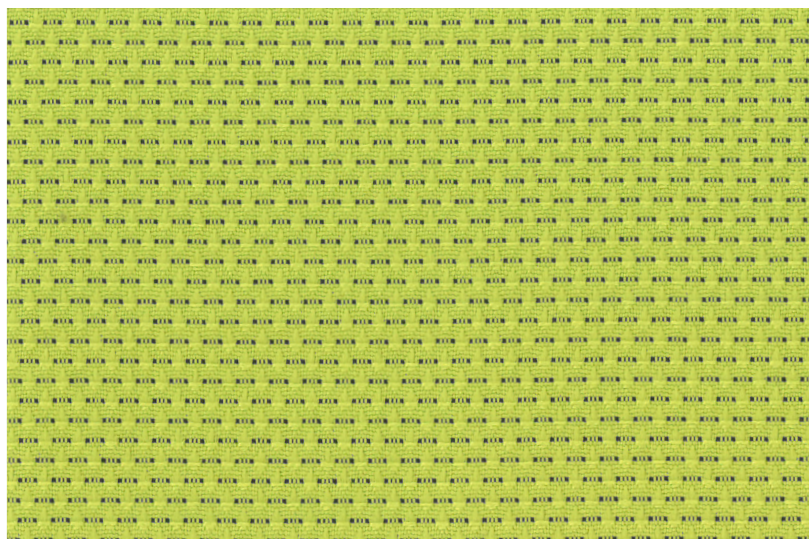
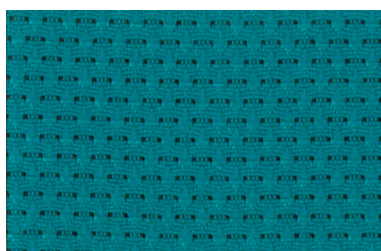


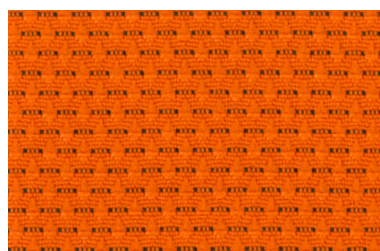
SEATING & PANEL FABRIC TEXTURE 2



0202 Lime



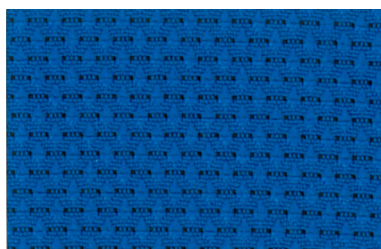
0203 Turquoise



0209 Orange



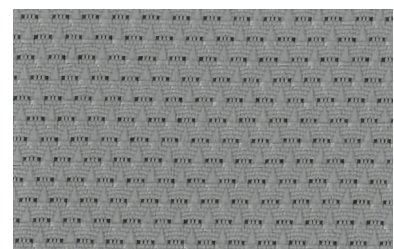
0207 Ivory



0212 Ocean



0210 Cardinal



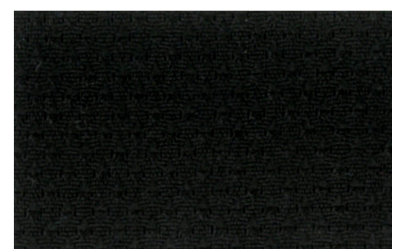
0204 Silver



0201 Royal



0211 Maroon



0206 Black

SEATING & PANEL FABRIC

TEXTURE 2



SPECIFICATION	
Composition	100% Polyester
Weight	339 grammes per running metres
Width	155 cms / 61 inches (+/- 1%)
Finishing	Water Repellent
Tensile Strength	Warp: 332.8 lbs, Weft: 219.4 lbs (ASTM D5034-1995)
Tearing Strength	Warp: Untearable, Weft: 13.0 lbs (ASTM D1424-1996 ; Elmendorf)
Colour Fastness to Crocking	Dry 4-5 / Wet 4-5 (AATCC 8-2001)
Colour Fastness to Light	4-5 (AATCC 16-2003 ; Option 3, Water Cooled, Xenon-Arc Lamp)
Flammability	BS EN 1021-1:1994 – Cigarette Passed BS EN 1021-2:1994 – Match Passed BS 7176:1995 – Low Hazard BS 476 Part 7 : Class 1 US CPSC 16 CFR Part 1610, CS 191-53 : Class 1 Flammability performance is dependent on the combination of materials used.
Cleansing	For water based stains, use a water - based cleansing agent. For oil based stains, use a solvent cleanser.
Colour Matching	All colours are matched by sphere spectrophotometer to ensure continuity within commercial tolerances. Batch to batch variation in shade may vary slightly between dye lots. Sample cuttings from the current stock shades can be obtained upon request.